

Messe de l'assemblée

G. LEFEBVRE

SEIGNEUR, PRENDS PITIE

G 18-78

Am Em F C Dm Am Dm Em

Sei- gneur, prends pi- tié de nous, Sei- gneur, prends pi- tié de nous
 O Christ, " " " " " " O Christ, " " " " "
 Sei- gneur, " " " " " " Sei- gneur, " " " " "

Detailed description: This block contains the musical notation for the hymn 'SEIGNEUR, PRENDS PITIE'. It features a single melodic line on a treble clef staff in common time. The melody consists of quarter and eighth notes. Above the staff, the chords Am, Em, F, C, Dm, Am, Dm, and Em are indicated. Below the staff, the lyrics are written in three lines, with some words repeated as " " to indicate that the melody continues over multiple lines of text.

ALLELUIA

U 18-79

C G Am Dm

Al- le- lu- ia! Bon- ne nou- vel- le! Al- le- lu- ia! Al- le- lu-

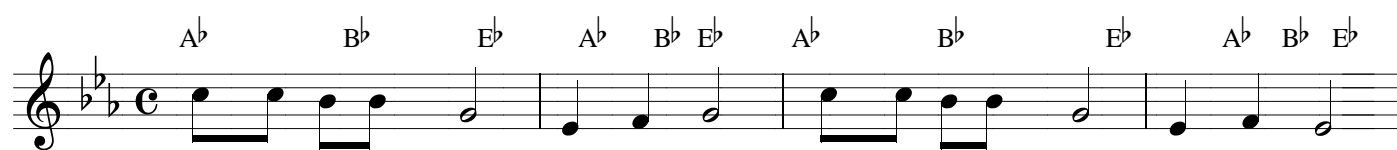
G C G Am Dm G C

ia! Al- le- lu- ia! Dieu nous ap- pel- le! Al- le- lu- ia! Al- le- lu- ia!

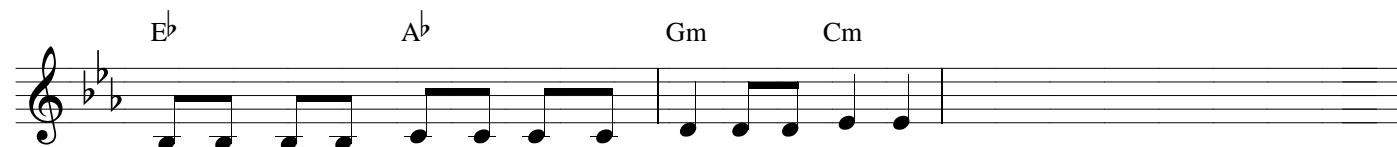
Detailed description: This block contains the musical notation for the 'ALLELUIA'. It is written in 6/8 time and consists of two staves. The first staff begins with a C-clef and a key signature of one sharp (F#). The melody is composed of quarter and eighth notes. Chords C, G, Am, and Dm are indicated above the first staff. The lyrics 'Al- le- lu- ia! Bon- ne nou- vel- le! Al- le- lu- ia! Al- le- lu-' are placed below the first staff. The second staff continues the melody with chords G, C, G, Am, Dm, G, and C indicated above it. The lyrics 'ia! Al- le- lu- ia! Dieu nous ap- pel- le! Al- le- lu- ia! Al- le- lu- ia!' are placed below the second staff.

SAINT EST LE SEIGNEUR

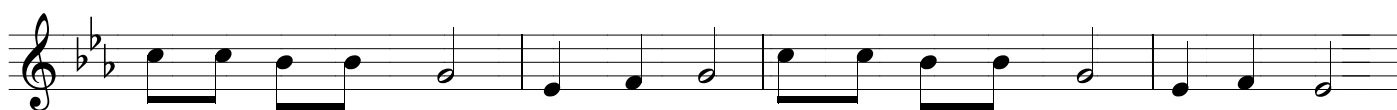
C 18-81



SAINT EST LE SEI- GNEUR! HO- SAN- NA! SAINT EST LE SEI- GNEUR! HO- SAN- NA!



Le ciel et la ter- re sont rem- plis de ta gloi- re



SAINT EST LE SEI- GNEUR! HO- SAN- NA! SAINT EST LE SEI- GNEUR! HO- SAN- NA!



Bé- ni soit ce- lui qui vient au nom du Sei- gneur



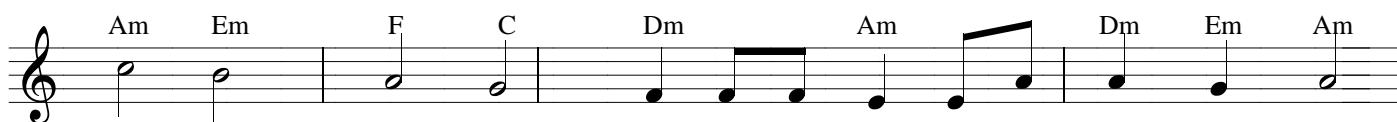
SAINT EST LE SEI- GNEUR! HO- SAN- NA! SAINT EST LE SEI- GNEUR! HO- SAN- NA!

♩ = 92

AGNEAU DE DIEU

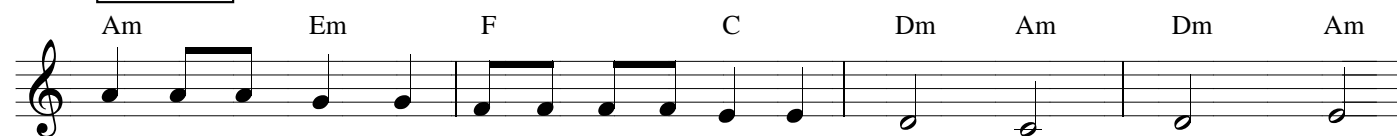
D 18-82

REFRAIN



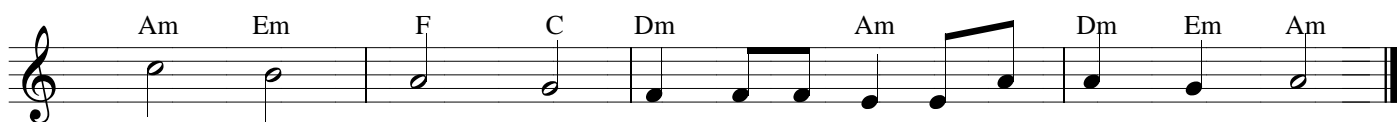
A- gneau de Dieu, A- gneau de Dieu, prends pi- tié de nous

SOLISTE



Toi qui en- lè- ves le pé- ché du mon- de, A- gneau de Dieu!
 Toi qui en- lè- ves le pé- ché du mon- de, A- gneau pas- cal!
 toi qui en- lè- ves le pé- ché du mon- de, A- gneau sau- veur!

DERNIER REFRAIN



A- gneau de Dieu, A- gneau de Dieu, don- ne- nous la paix!